

# Budget 2021: Prevention and community leadership

Joint  
Venture

Eliminating  
family violence  
and sexual violence

## Safety responses: a foundation for whānau-centred, integrated, community-led responses (\$32.8 million)

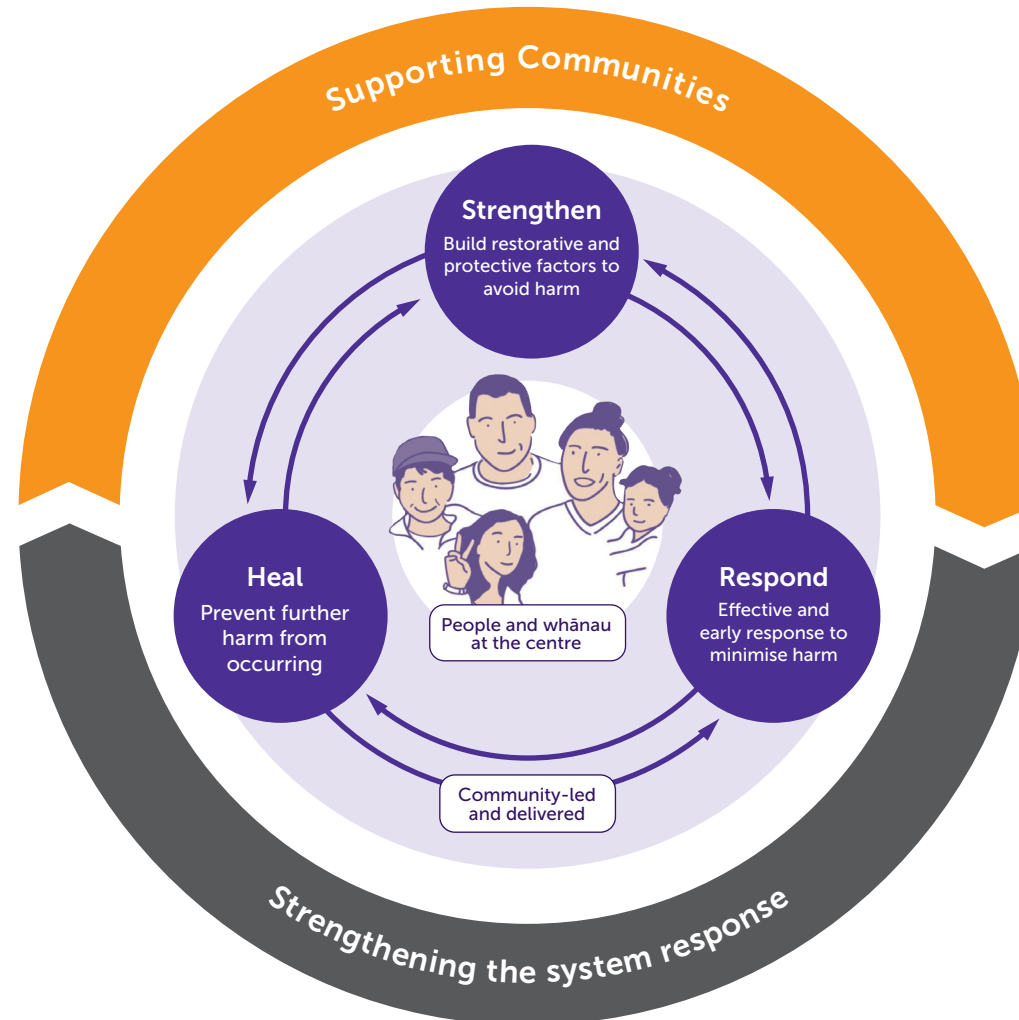
**\$32.8 million** to ensure the ongoing funding of place-based, multi-agency safety responses in two Integrated Safety Response (ISR) sites in Canterbury and Waikato and three Whāngaia Ngā Pā Harakeke (WNPH) sites in Whiria Te Muka (Te Hiku), Tairāwhiti, and Counties Manukau. This funding, for community-based teams, replaces time-limited funding for these critical safety responses. (Vote Police and Vote Health)

## Strengthening the system response (\$18.4 million)

**\$7.9 million** for Māori-Crown partnership arrangements to enable Māori to lead in the transformation of the family violence and sexual violence system. (Vote Justice)

**\$9.2 million** for additional Joint Venture resourcing for core Joint Venture functions and to support the delivery of the National Strategy and Action Plans. (Vote Justice)

**\$1.3 million** for strategic coordination of data and insights to build a learning system, including a review of how government contracts family violence and sexual violence research provision to create a collaborative and transformative research agenda. (Vote Justice)



## Community-led, whānau-centred family violence and sexual violence services (\$80.7 million)

This funding expands existing family violence and sexual violence services in the community, with a focus on children, whānau, and users of violence.

**\$12.0 million** to expand whānau-centred facilitation by kaupapa Māori providers to strengthen and restore healthy, safe, and functional whānau relations for whānau experiencing family violence and sexual violence. (Vote Māori Development)

**\$8.0 million** to work with communities and whānau to support parents and reduce risk in families by extending the successful SKIP (Strategies with Kids, Information for Parents) community prevention programme. (Vote Children)

**\$12.2 million** to provide access to 24/7 accommodation and wrap-around support services for people using violence, to develop effective strategies to stop using violence and prevent further harm. This initiative provides ongoing funding for existing services in five sites. (Vote Social Development)

**\$48.5 million** to ensure the ongoing funding of place-based, multi-agency safety responses in two Integrated Safety Response (ISR) sites in Canterbury and Waikato and the Counties Manukau Whāngaia Ngā Pā Harakeke (WNPH). This funding, for continued services and flexi funds, replaces time-limited funding for these critical services. (Vote Police)